

Mobility Scooter

Ramps

Lightweight Suitcase



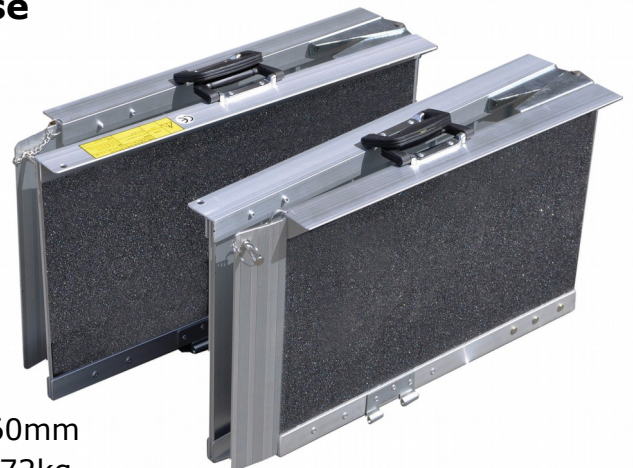
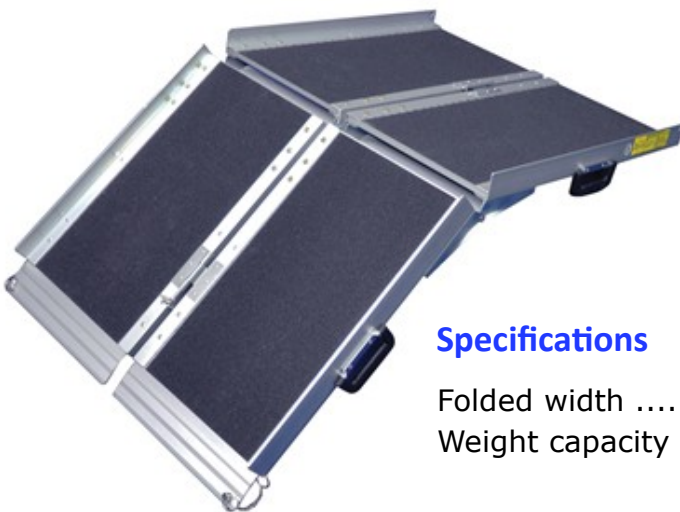
Specifications

Folded width 370mm
Weight capacity 272kg

Suitable for majority of scooters and wheelchairs
Provides access to vehicles and buildings
Safety all-weather tread
Easy to use and transport

Product Code: 910mm(3ft) VA142C
1520mm(5ft) VA142K

Folding Suitcase



Specifications

Folded width 360mm
Weight capacity 272kg

Product Code: 1220mm(4ft) VA143D

Your Local Agent

Signature HealthCare & Mobility
PO Box 203, Caboolture QLD 4510
Ph: 1300 717439
sales@shcmobility.com.au
www.shcmobility.com.au